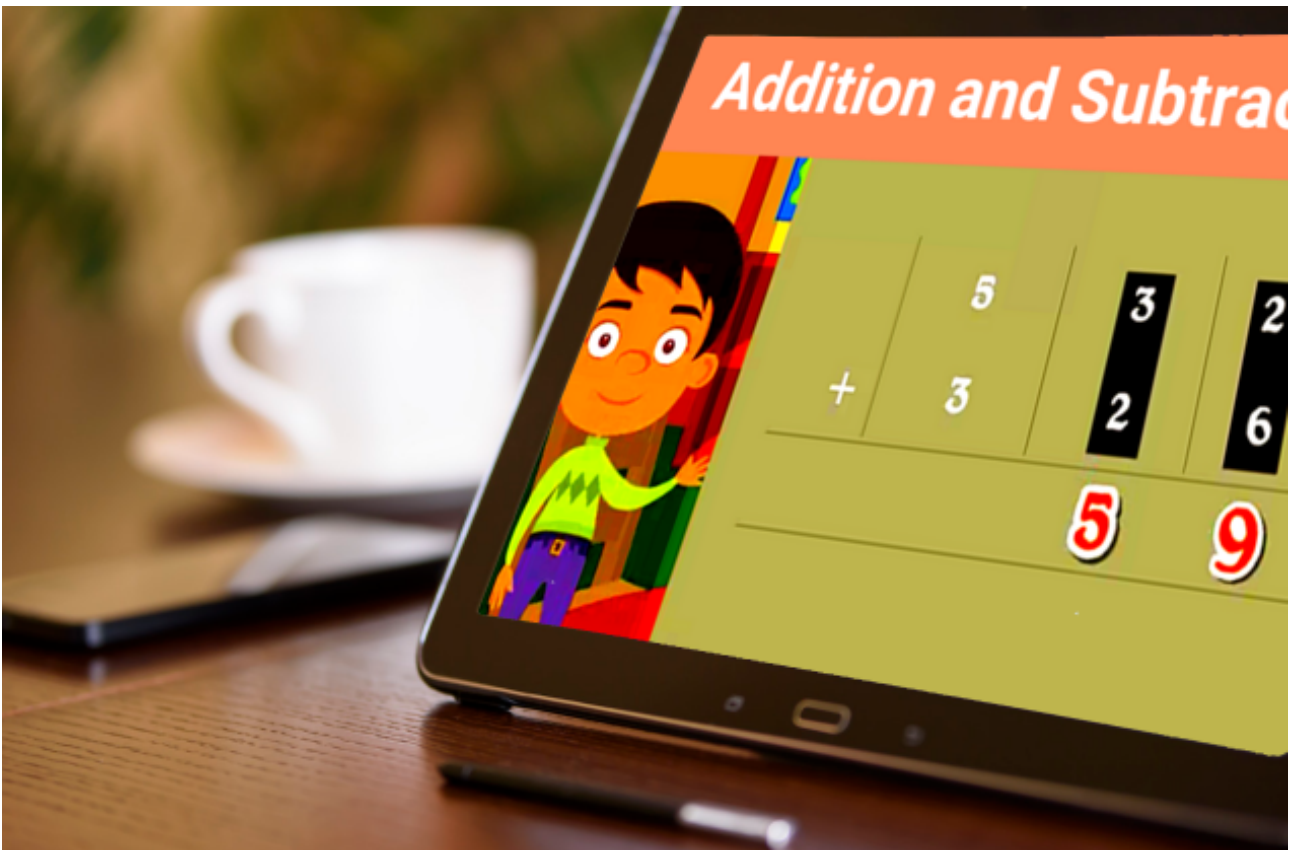


Educational Tablets for Learners



Educational Tablets preloaded with Customised Learning Content for Schools, NGOs and Learners

For non-judgemental, enjoyable & personalised Digital Learning

Animations, Project videos, Digital Books & Assessments on a Tablet

English Medium and Local Language Content

Aligned to CBSE/ICSE or any state board

At iDream Education, we offer offline educational tablets pre-loaded with multiple categories of learning content. The content is customised as per class, curriculum and medium of instruction followed by the learner.

An online reporting dashboard provides a tablet wise usage and learning report. The same can be used to track the progress and interest of each child and to guide them with personalised feedback.

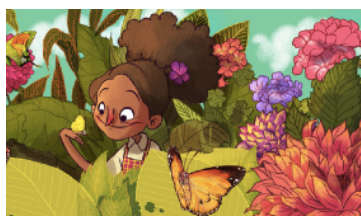
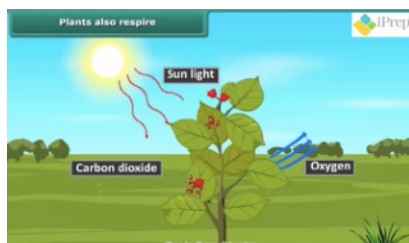
If you are a school, an NGO or a parent deliberating giving an educational tablet to your students, we offer an easy to use, safe and a comprehensive personalised digital learning solution.

Play . Learn . Grow

Learning Content

We offer 4 categories of content on each device.

S.No.	Content Type	Description
1	Multimedia Animations	designed to build conceptual understanding in an enjoyable way. Students enjoy stories and connect & relate to real life examples to learn better.
2	Experiment & Project Videos	Do-It-Yourself experiment and project videos, which students can use to conduct experiments and build models using waste materials in their home and school. These videos help build practical understanding of topics.
3	Digital Book Library	Multiple categories of books for holistic learning - stories, poems, comics, art, literature, inspirational stories, moral values
4	Assessments	<ol style="list-style-type: none"> 1. More than 10,000 questions for topic wise mastery and learning outcomes 2. Practice with 30-50 questions to achieve mastery 3. Full syllabus tests for exam readiness 4. Question by question feedback for improved understanding



Content is customised on every tablet as per the learner. We offer content for classes 1 to 12 in English medium and Local Languages aligned to CBSE/ICSE or any other state board

Reporting

The tablet in a real time records all the activity which the child is performing on the tablet. The report is securely saved offline on the device itself. Whenever the tablet gets an internet (even basic 2G connection), all reports are auto synced to an online reporting dashboard.

As a stakeholder, you will have your unique access to the reporting dashboard, which lets you monitor student wise usage and learning data anytime, anywhere. The information can then be used to uniquely guide each child with personalised feedback and a learning map.

The screenshot displays the TABLAB reporting dashboard. At the top, there is a navigation bar with the TABLAB logo, a welcome message "Welcome iDream", and links for HOME, ABOUT, and LOGOUT. Below the navigation bar, there is a breadcrumb trail: "Project Dashboard > Project Reports > School Reports >".

On the left side, there are four red buttons for report types: "Graphical Usage Reports", "Classwise Usage Reports", "Assessments Usage Reports", and "User Master Reports".

The main content area is divided into two sections. The top section is titled "School Details" and contains a table with the following information:

School Details	
School Name	iDream School
Location	DLF Valley, Maharashtra
Project Funder	-
Commencement Date	2018-03-22
Implementation Partner	-
Classes Covered	5 To 10
Number Of Tabs Installed	8

The bottom section is titled "Class Details" and contains a table with the following information:

Class Details	
Number Of Students	40
Number Of Active Students	-

Below the class details, there is a "Select Time" dropdown menu set to "Last 1 Year", and "From Date" and "To Date" fields set to "2018-03-02" and "2019-03-02" respectively. There are "Go" and "Download" buttons.

The main data table is titled "Usage Table (Usage in hrs)" and contains the following data:

Student Name	Apps	Assessment App	Books	Multimedia	Videos
san2	-	0.0	-	-	-
San	-	0.0	-	-	0.0
puneet	-	0.0	0.1	-	-
san3	0.1	0.3	0.1	0.2	0.0

Annotations in the image include "Class wise report" with an arrow pointing to the "Class 1-A" tab, and "Student wise report" with an arrow pointing to the "Usage Table" data.

Accessories provided with every Tablet

1. SD Card (optional - depends on the size of content)
2. Screen Guard
3. Protective flip cover
4. Ear Phone

Tablet Options

To serve the vision of schools, NGOs and parents from across the country, we offer two hardware options.

Both have been duly tested for quality, performance and durability.

1. Lenovo 7inch TAB Model # 7304F 1G+8GB WiFi Only



Screen Size	7inch
Processor Speed	1.3 GHz
RAM Size	1 GB
Storage	8 GB

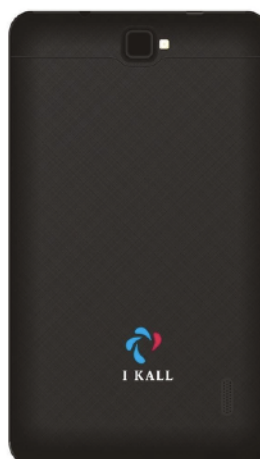
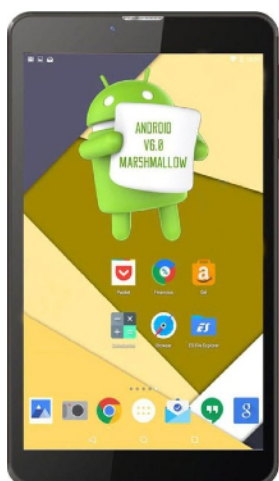
Unit Price:

With English Medium Learning Content - Rs. 20,000 per tablet

With Local Language Content - Rs. 12,000 per tablet

The above price is inclusive of hardware, accessories, content, reporting dashboard and 1 year standard company warranty

2. IKall N9 Tablet (7inch, 8GB, Wifi +3G Calling)



Screen Size	7inch
Processor Speed	1.3 GHz
RAM Size	1 GB
Storage	8 GB

Unit Price:

With English Medium Learning Content - Rs. 15,000 per tablet

With Local Language Content - Rs. 8,000 per tablet

The above price is inclusive of hardware, accessories, content, reporting dashboard and 1 year standard company warranty

Customised Pricing

Please note that above is the retail price. If you are a school, NGO, government body or a CSR foundation and are looking to procure in bulk, please reach out to us with your requirements and we will create a customised proposal for you aligned as per your vision.

Contact Us

Rohit Prakash | rp@idreameducation.org | +91 9971033119

Puneet Goyal | p@idreameducation.org | +91 9592296975

www.idreameducation.org